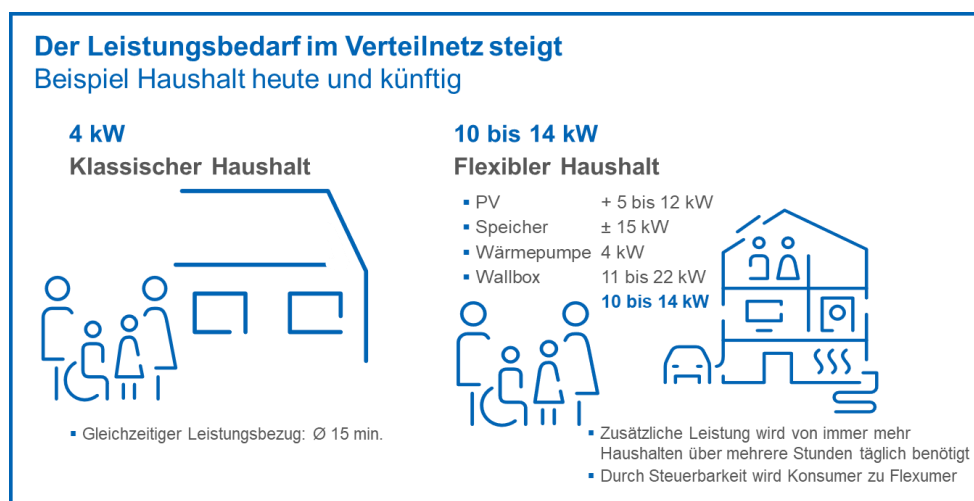
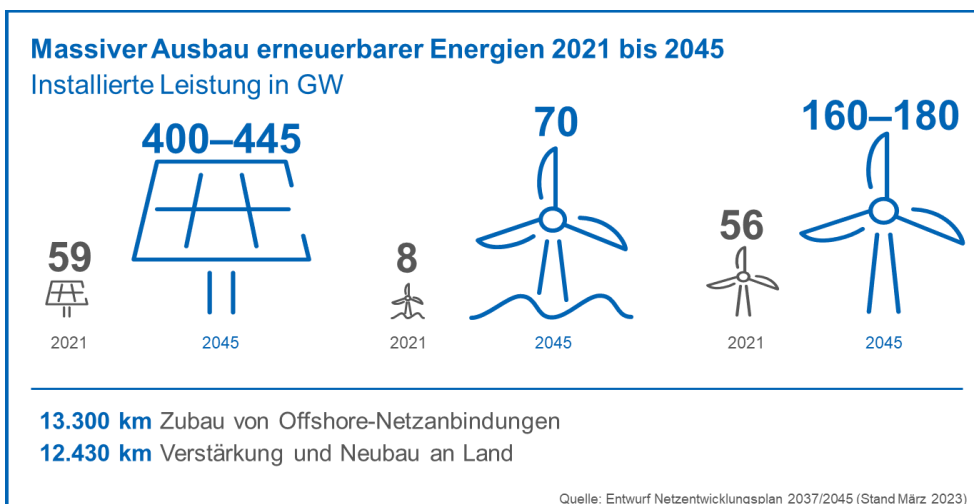
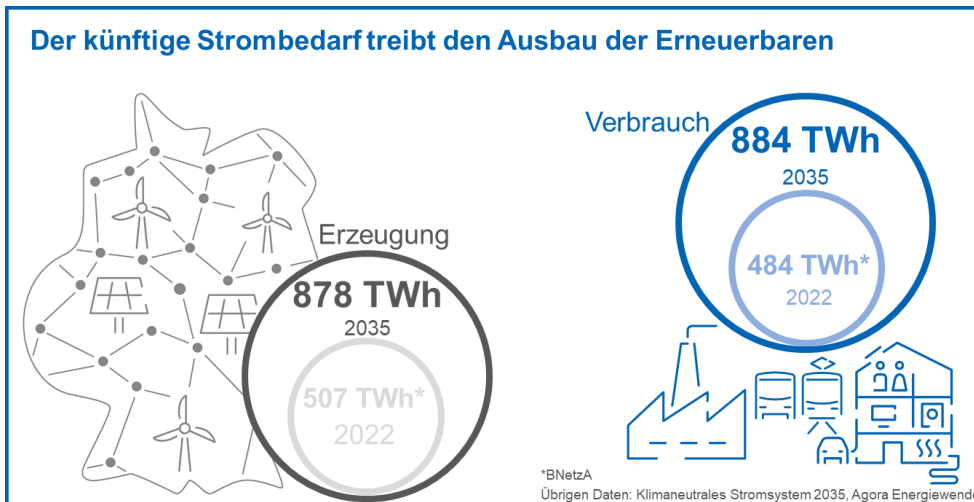
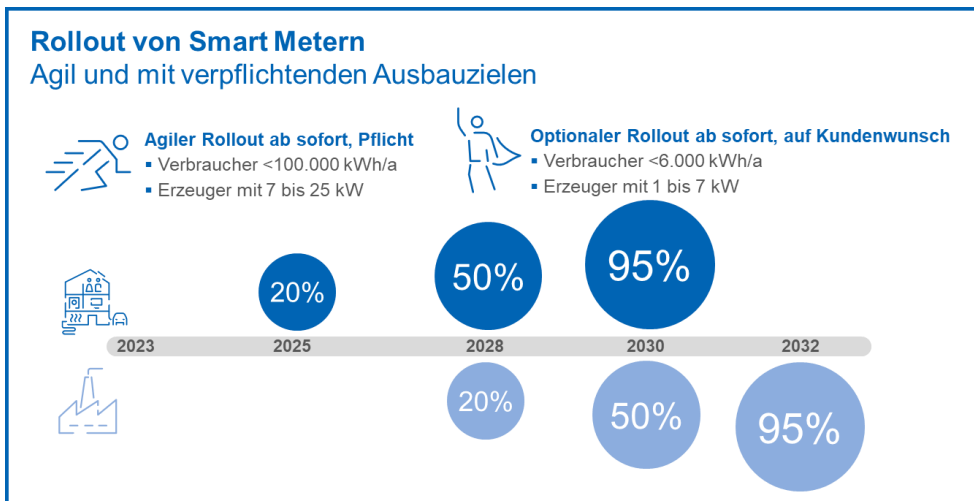
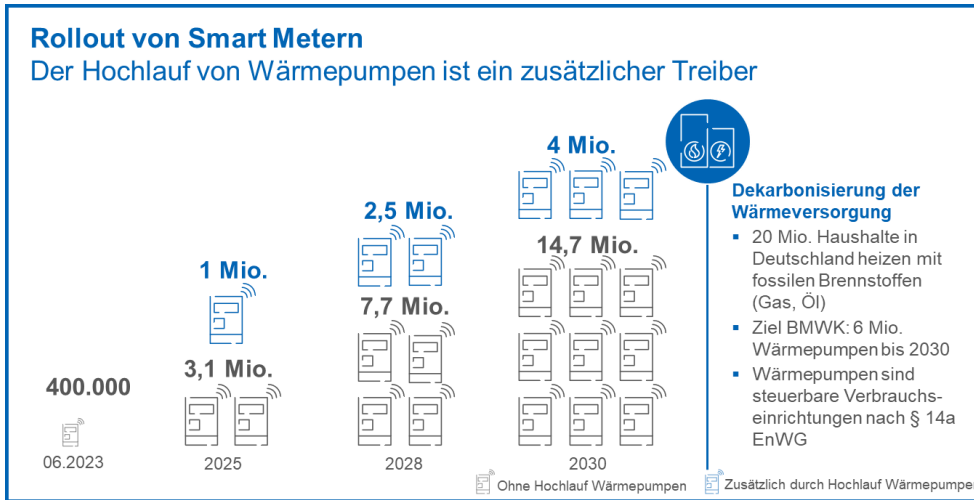


## Fakten

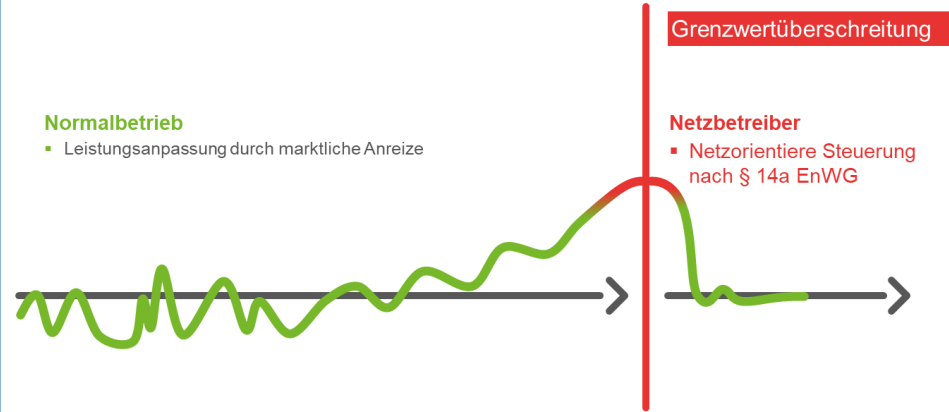
Energiesystem, intelligentes Messsystem und intelligente Steuerung (Stand: 06/2023)





## Intelligentes Steuern – reaktiv (Modell BNetzA)

Notfallmaßnahmen erforderlich



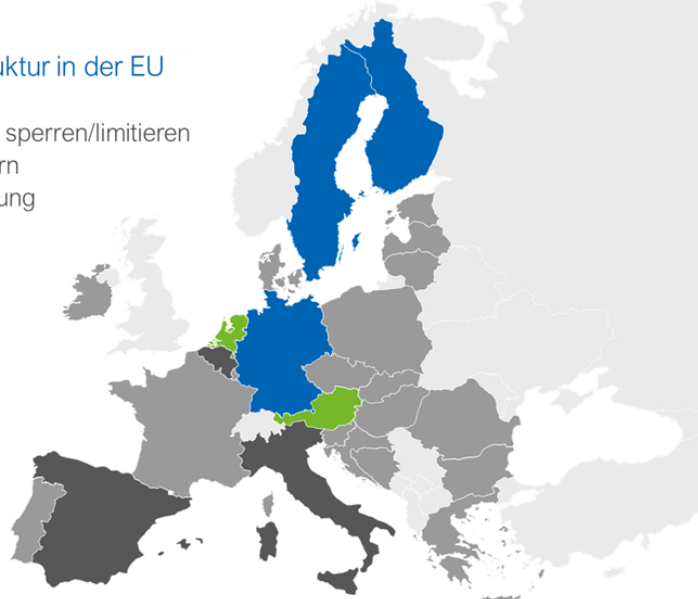
## Intelligentes Steuern – vorausschauend (Modell VDE FNN)

Das Netz mit netzdienlichen Maßnahmen im Griff



## Smart-Meter-Infrastruktur in der EU

- Nur Metering
- Metering und Strom sperren/limitieren
- Metering und Steuern
- Interesse an Steuerung



Quelle: Benchmarking smart metering deployment in the EU-28, EU Kommission, 12/2019